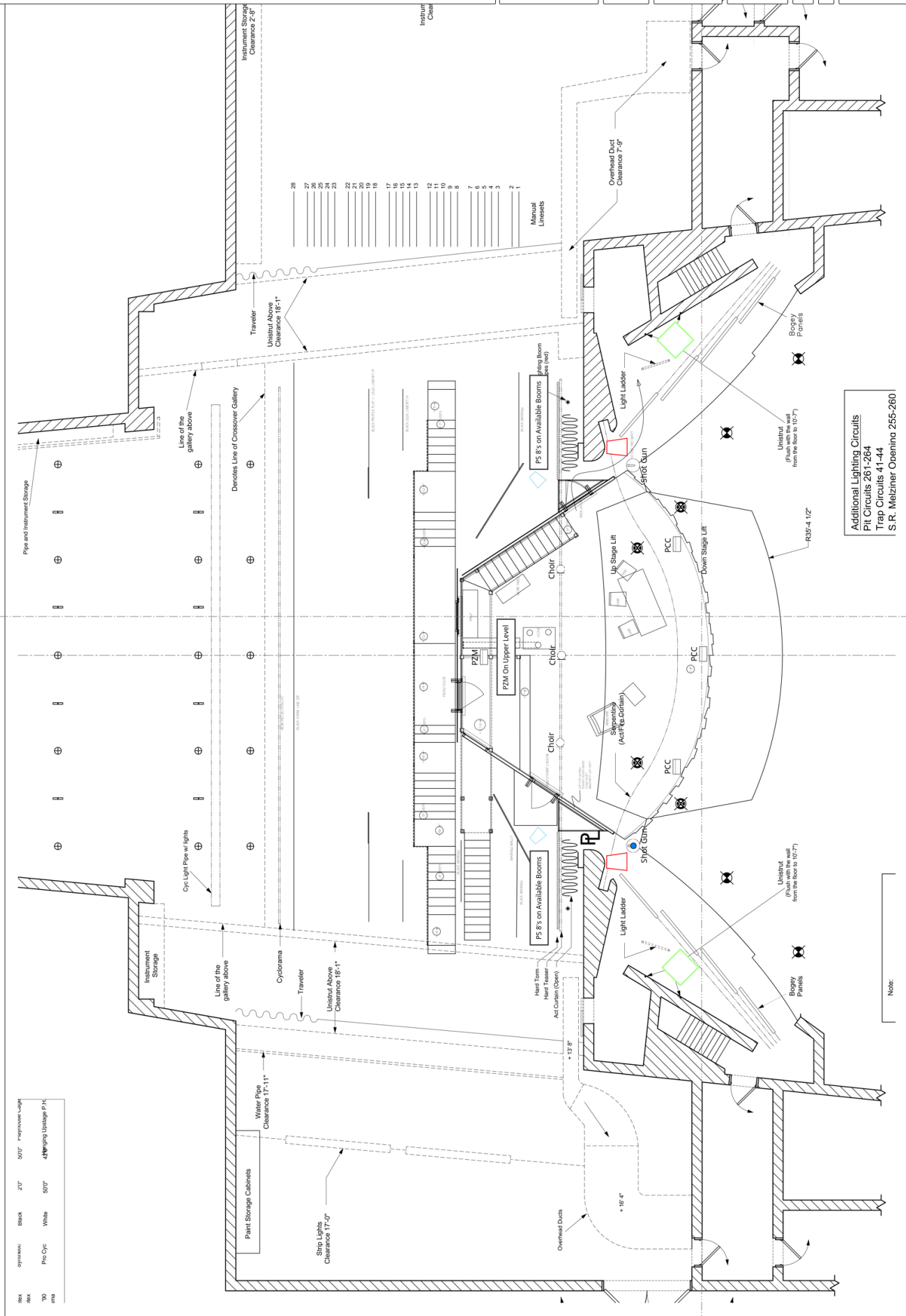


SYMBOL KEY
 EAW-SUB
 PS 8
 PS 15

Max
 30
 min

Symmetric Black 21' 507' = exposure length
 Pro Cyc White 507'

4' hanging (Storage P.H.)
 4' hanging (Storage P.H.)



Additional Lighting Circuits
 Pit Circuits 261-264
 Trap Circuits 41-44
 S. R. Melzner Oberinna 255-260

Note:

General Notes:
 1. PS 8's - 24' C/c
 2. PS 15's - 48' C/c
 3. ALL C/C's installed in house

PRODUCTION
 THE FOLLOWING INFORMATION IS FOR THE PRODUCTION TEAM ONLY.
 IT IS NOT TO BE USED FOR THE PRODUCTION OF THE PLAY.
 THE INFORMATION IS FOR THE PRODUCTION TEAM ONLY.
 THE INFORMATION IS FOR THE PRODUCTION TEAM ONLY.

Hayat Dominguez
 hayat.dominguez@gmail.com

PRODUCTION
 Check with
 SCENE DESIGN
 COSTUME DESIGN
 SOUND DESIGN
 TECHNICAL DIRECTOR
 PRODUCTION MANAGER
 PRODUCTION DESIGNER
 PRODUCTION OFFICER
 PRODUCTION ASSISTANT

Gem of the Ocean
 Cowell Playhouse

DATE: 12/14/14
 BY: PS 8/PS 15
 REVISION:
 DRAWN BY:
 1
 of 1

Speaker Plot